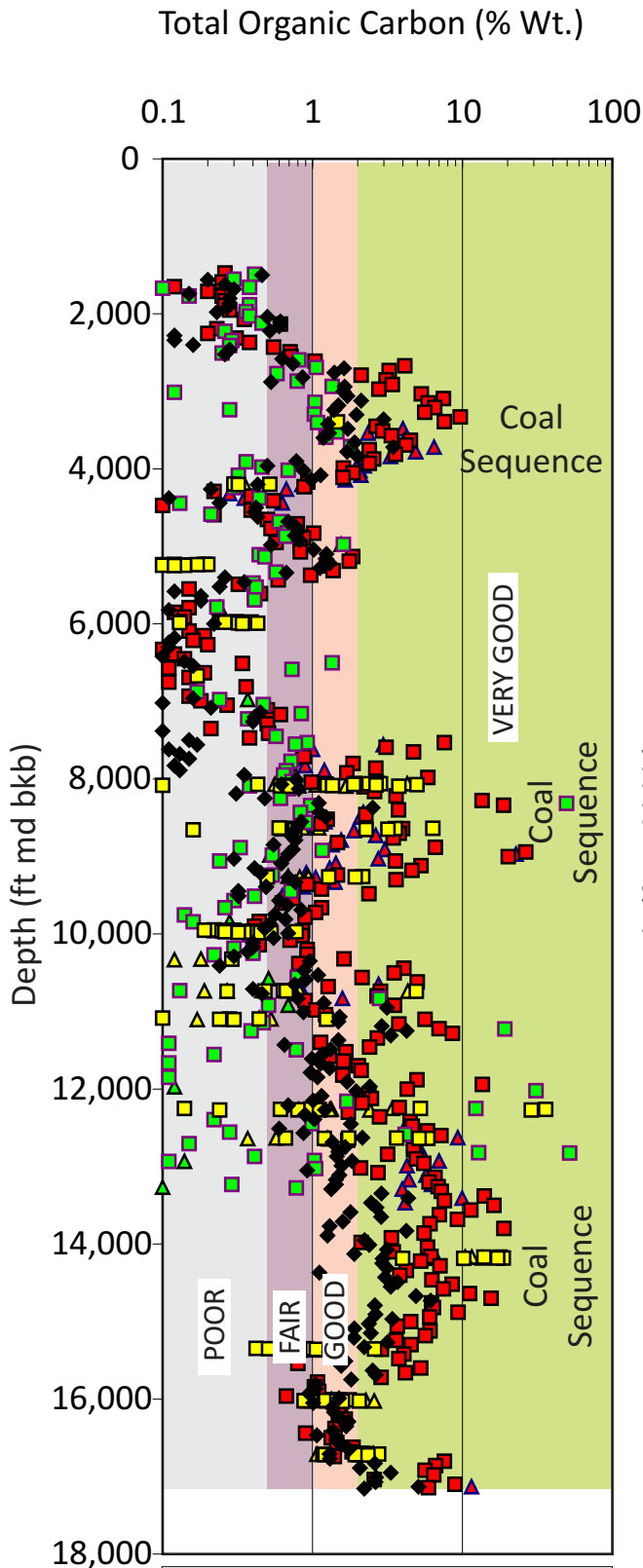
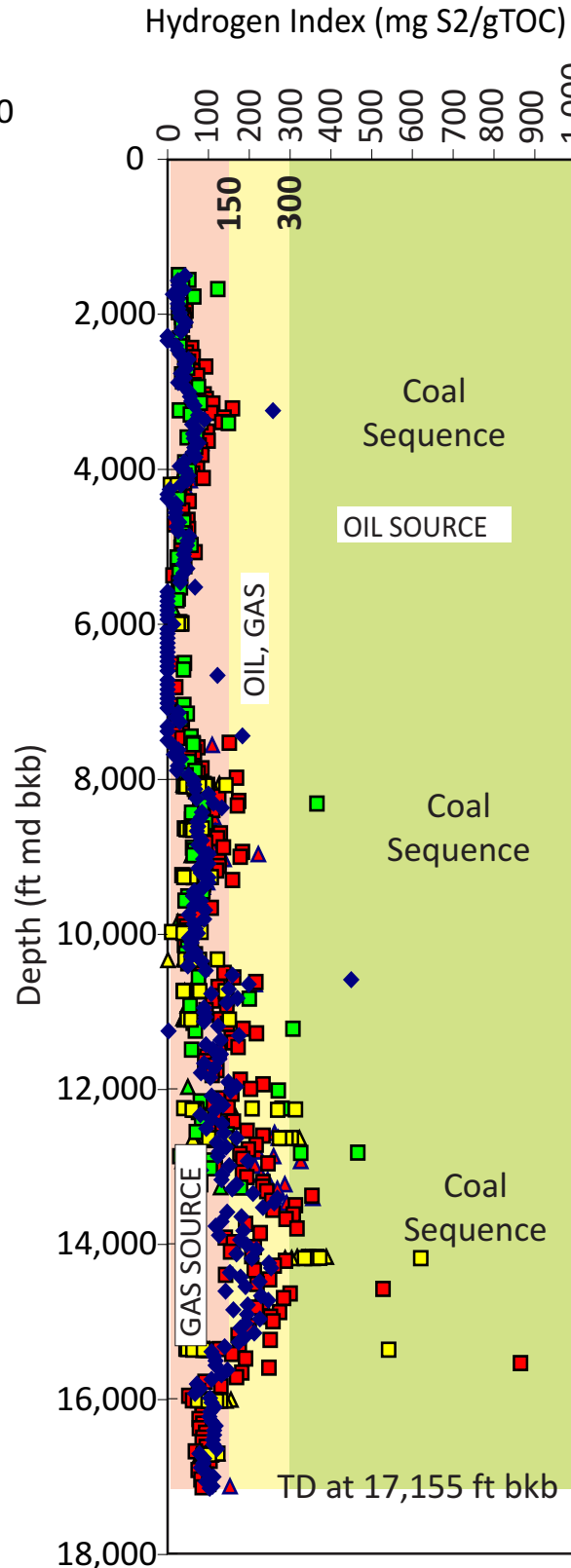


North Aleutian Shelf COST 1 Well



- Explanation**
- ▲ Exlog-Cuttings (Coal Retained); n = 60
 - ▲ Exlog-Conventional Cores; n = 62
 - ▲ Exlog-Sidewall Cores; n = 12
 - Robertson Research-Cuttings; n = 262
 - Robertson Research-Sidewall Cores; n = 121
 - Robertson Research-Conventional Cores; n = 139
 - ◆ Exlog-Cuttings/Coal Removed (n=268)

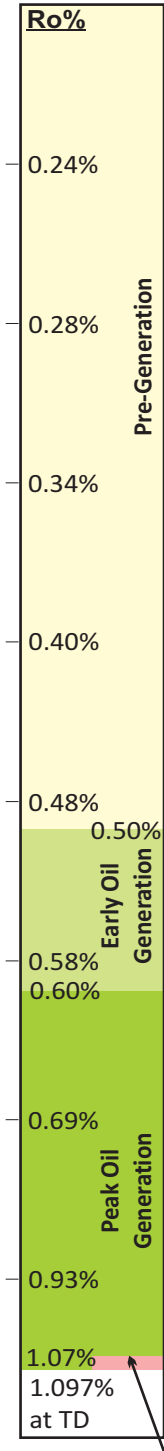
Total organic carbon data from Exlog (1983) and Robertson Research (1983). Source Rock Potential Classes from Peters (1986).



- Explanation**
- ▲ Exlog-Cuttings (Coal Retained); n = 60
 - ▲ Exlog-Conventional Core; n = 62
 - ▲ Exlog-Sidewall Cores; n = 12
 - Robertson Research-Cuttings; n = 226
 - Robertson Research Sidewall Cores; n = 89
 - Robertson Research Conv. Cores; n = 108
 - ◆ Exlog Cuttings-Coal Removed (n=268)

Hydrogen Index data from Exlog (1983) and Robertson Research (1983). Potential Hydrocarbon Type Classes from Peters (1986).

Thermal Maturity
(Vitrinite Reflectance)



Dry Gas Generation Onset @ Ro>1.07% (16,984 ft bkb); Oil Generation Continues to Ro=1.35% (19,251 ft bkb, projected below data)

Play Sequences

Formations	Play Sequences
Unnamed Quaternary 1,590 ft	Milky River (Play 4)
Milky River Formation 2,700 ft	
Bear Lake Formation 4,870 ft	Bear Lake - Stepovak (Plays 1, 3)
Stepovak Formation	
10,380 ft	Tolstoi (Play 2)
Tolstoi Formation	